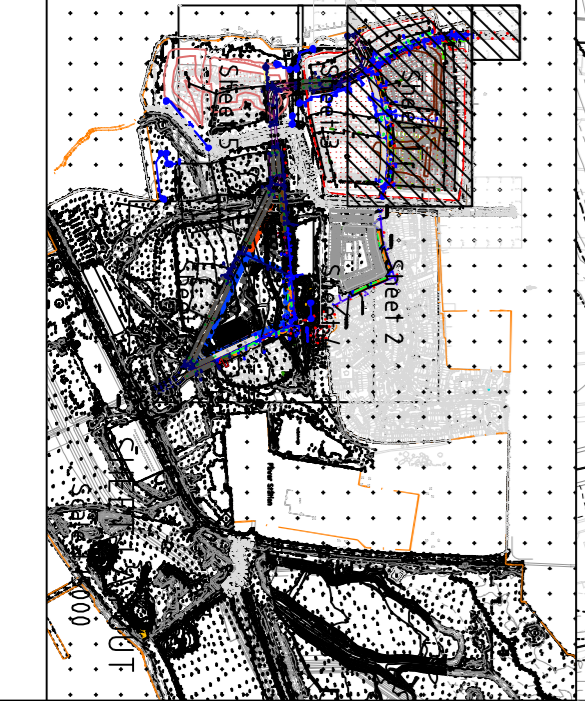


| Issue | Description | Dwn | Cnd | Appd | Date |
|-------|--------------------------------|-----|-----|------|----------|
| C2 | ADOPTION AREA REVISED FOR M100 | TC | DM | DM | MAR 2010 |
| C1 | FIRST ISSUE | TR | TC | DM | OCT 2010 |

- LEGENDS:**
- FOR ADOPTION
 - STREET LIGHTS
 - ROAD SIGNAGE
 - SURFACE WATER DRAINAGE
 - GULLIES
 - SECTION 38 BOUNDARY



Client

BARKING RIVERSIDE

| Status | | FOR APPROVAL | |
|-------------|---|------------------|------------|
| Date | OCT 2010 | Global Scale | 1:1250 @A1 |
| Designed by | T Chaudhry | Horizontal Scale | |
| Drawn by | T Ranjin | Vertical Scale | |
| Checked by | T Chaudhry | Original | A1 |
| Approved by | DM/then | DS/Am / | ODN/WCS84 |
| Filename | K:\barkinc\drawings\Phase 1\shaded\stage -1\central\stage -1\111111.dwg | | |

Project

BARKING RIVERSIDE DEVELOPMENT

PHASE -1 STAGE -1

SECTION 38 AGREEMENT PLAN

Hyder

HYDER CONSULTING (UK) LTD
 The Surrey Research Park, Guildford, Surrey GU2 7AR
 Tel: +44 (0)1483 535000 Fax: +44 (0)1483 535051

Drawing No. H38-GD01671-LND

Issue C2

Version V1